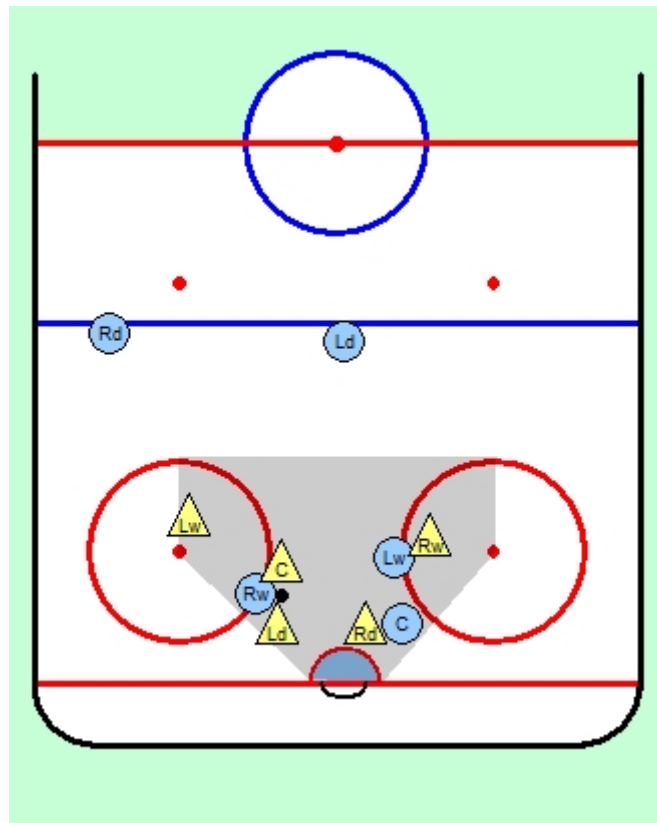




“Make it hard for them to score close to our net”

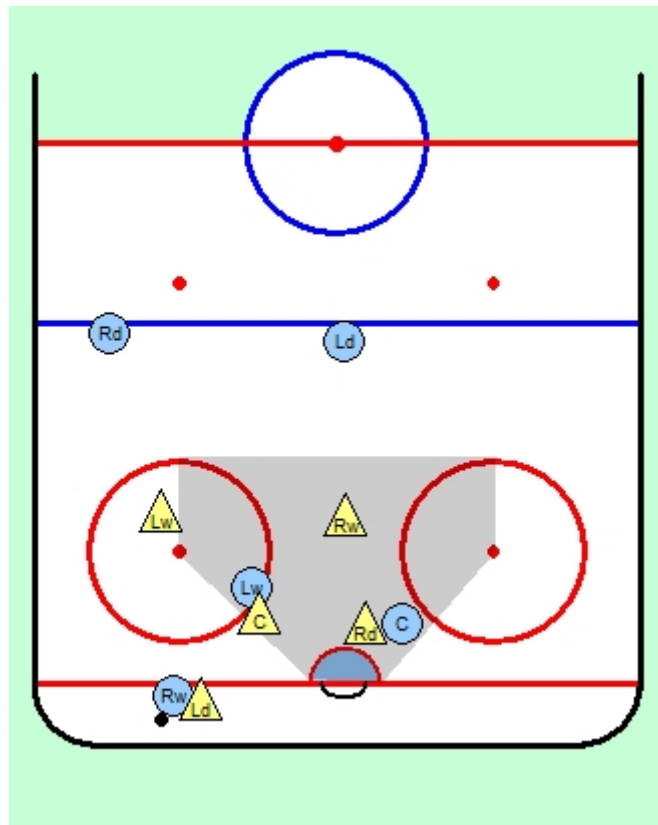
DEFENSIVE ZONE – PROTECT THE HOUSE – GRADE A SCORING AREA

The Grade A scoring area is the area in grey in the diagram below so when the puck is there we have a 5 on 3 player advantage:



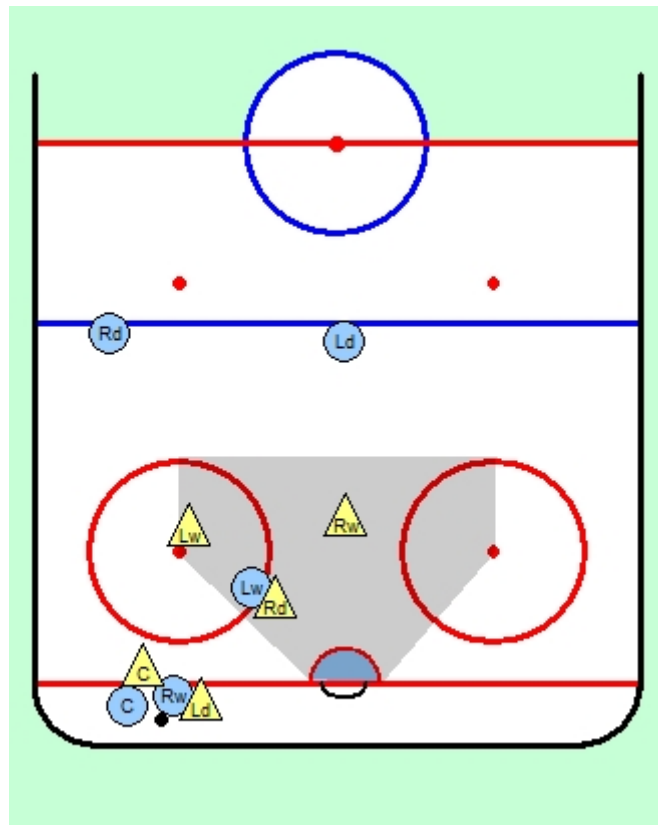


If the puck goes to a corner with one player from each team there, the coverages look like this:



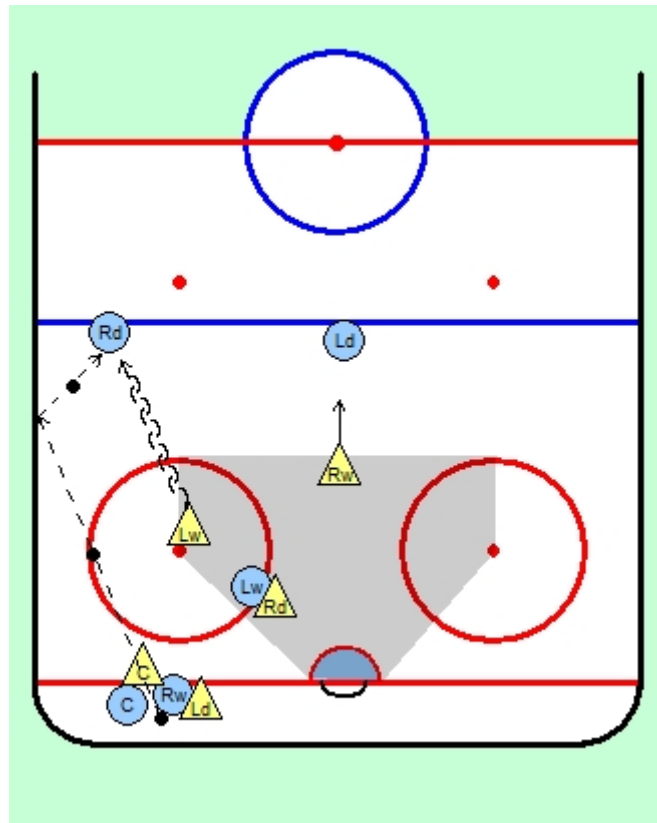


If the puck goes to a corner with two players from each team there, the coverages look like this:



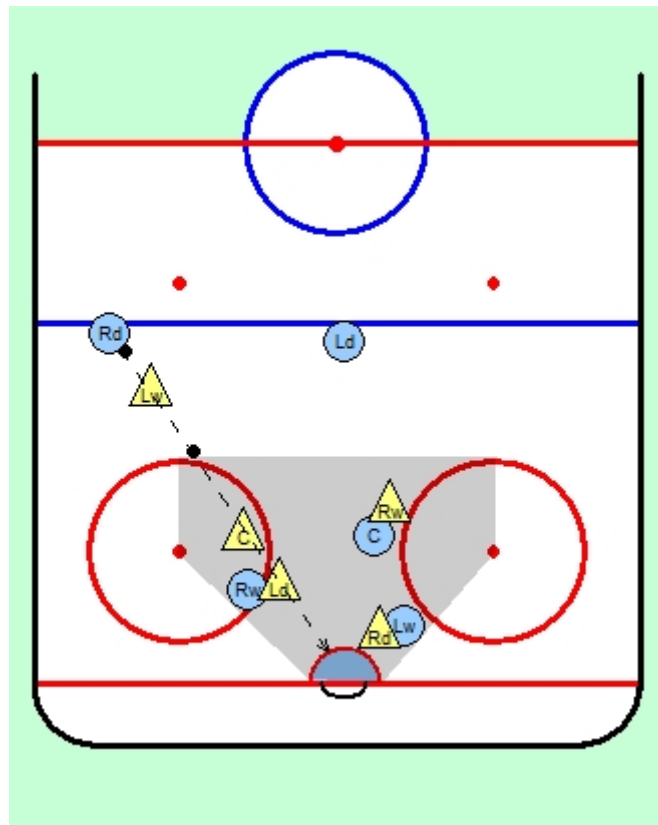


If the puck is being passed to their right defenceman, the coverages look like this and the Lw should angle to their D towards the boards a bit so their D doesn't walk to the middle along the blueline:





If the puck is at the point and being shot, the coverages look like this to line up and block the shot:





If they get possession coming up the wall from the corner and cutting into the middle, the coverages look like this:

